



MONASH South Africa

A campus of Monash University Australia

Reflecting on a Child and Youth Care degree programme for the purpose of the professional registration of graduates

A/Prof Rika Swanzen
Child and Youth Development
2 July 2015



Overview of session

1. Monash & Laureate Universities
2. Overview of the degree
3. Student profile 2010-2014
4. Benchmarking
 - a. Dual accreditation – globalisation
 - b. Outcome levels
 - c. Service user involvement
 - d. Student registration process

Monash South Africa (MSA)

- Monash University based in Melbourne, Australia, was founded in 1958 and is the second oldest university in the State of Victoria. Monash is a member of Australia's Group of Eight and the only Australian member of the influential M8 Alliance of Academic Health Centers, Universities and National Academies. Monash enrolls approximately 45,000 undergraduate and 17,000 graduate students, making it the university with the largest student body in Australia. The university has seven campuses, five of which are in Victoria, one in Malaysia, and one in South Africa. Monash also has a research and teaching centre in Prato, Italy, a graduate research school in Mumbai, India and a graduate school in Jiangsu Province, China. Since December 2011, Monash has had a global alliance with the University of Warwick in the United Kingdom.

Laureate International Universities

- The Monash South Africa (MSA) campus, started in 2001 to incorporate a Sub-Saharan African presence, as the first foreign university established in South Africa. It is located on a 100 hectare site in Ruimsig in North-west Johannesburg, in the province of Gauteng. The diverse student mix includes domestic (South African) students and a large number of students from Botswana and Zimbabwe.
- In 2013 MSA partnered with Laureate International University who is the world's largest network of Universities with over 950 000 students across 75 institutes across 29 countries.

<http://www.laureate.net/OurNetwork#>

Undergraduate units

AZA1285

Child and youth development in South Africa: A person-in-environment perspective

AZA1286

Child and youth development: A five-level developmental model

AZA2763

Child and youth assessment: Risk and protective factors, signs and symptoms

AZA2765

Child and youth interventions: Individual, group and community interventions

AZA2762

Health and safety guidelines for children and youth

AZA2764

Building support networks for children and families

AZA3769

Family functioning and child abuse: The child and youth care worker's role

AZA3770

Intermediary services in courts: Protecting the rights of the child and youth victim

AZA3771

Management of community projects: Working preventatively with children, youth and families

AZA3772

Field placements in child and youth care settings

Honours units

AZA4310

Child and youth care policy and leadership: Advocating for the rights of children and youth

AZA4311

Child and youth care research project A

AZA4312

Child and youth care research project B

AZA4450

Researching for social sciences and humanities

PART-TIME OFFERING PLANNED FROM 2014 DEPENDENT ON INTEREST

For more information please contact the Head of Section:

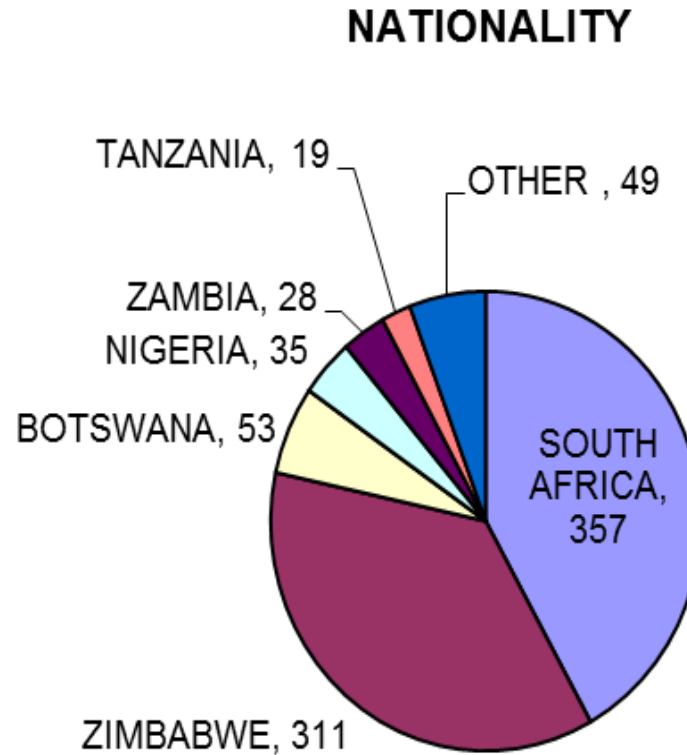
rika.swanzen@monash.edu

Structure of current major (3+1)

CYD units	Rest of course map
10 undergraduate units <ul style="list-style-type: none"> Two 1st year gateway units 	Electives from Psychology, Criminology; Public Health; Sociology; International Studies
<ul style="list-style-type: none"> Two 2nd year cornerstone units (assess & intervene) Two rotating 2nd year units 	Minor (two 2 nd year units)
<ul style="list-style-type: none"> Two 3rd year rotating units One 3rd year unit in One 3rd year capstone unit – field placement 	Electives or Double major
<ul style="list-style-type: none"> Honours – theory & dissertation 	Research in social science

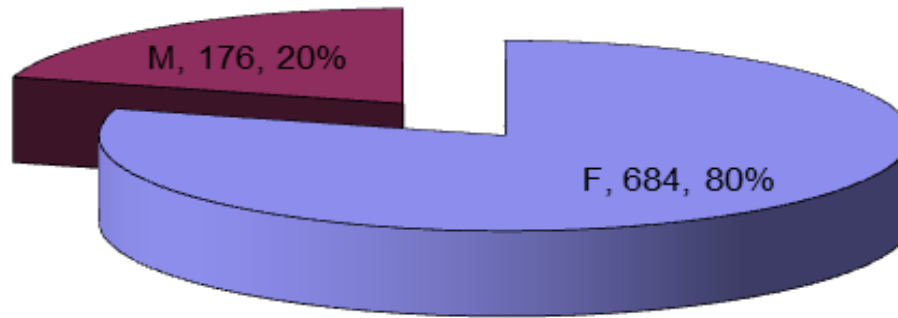
144 hours per unit = 6 points = 15 credits
12 hours per week

Student profile (n = 852)

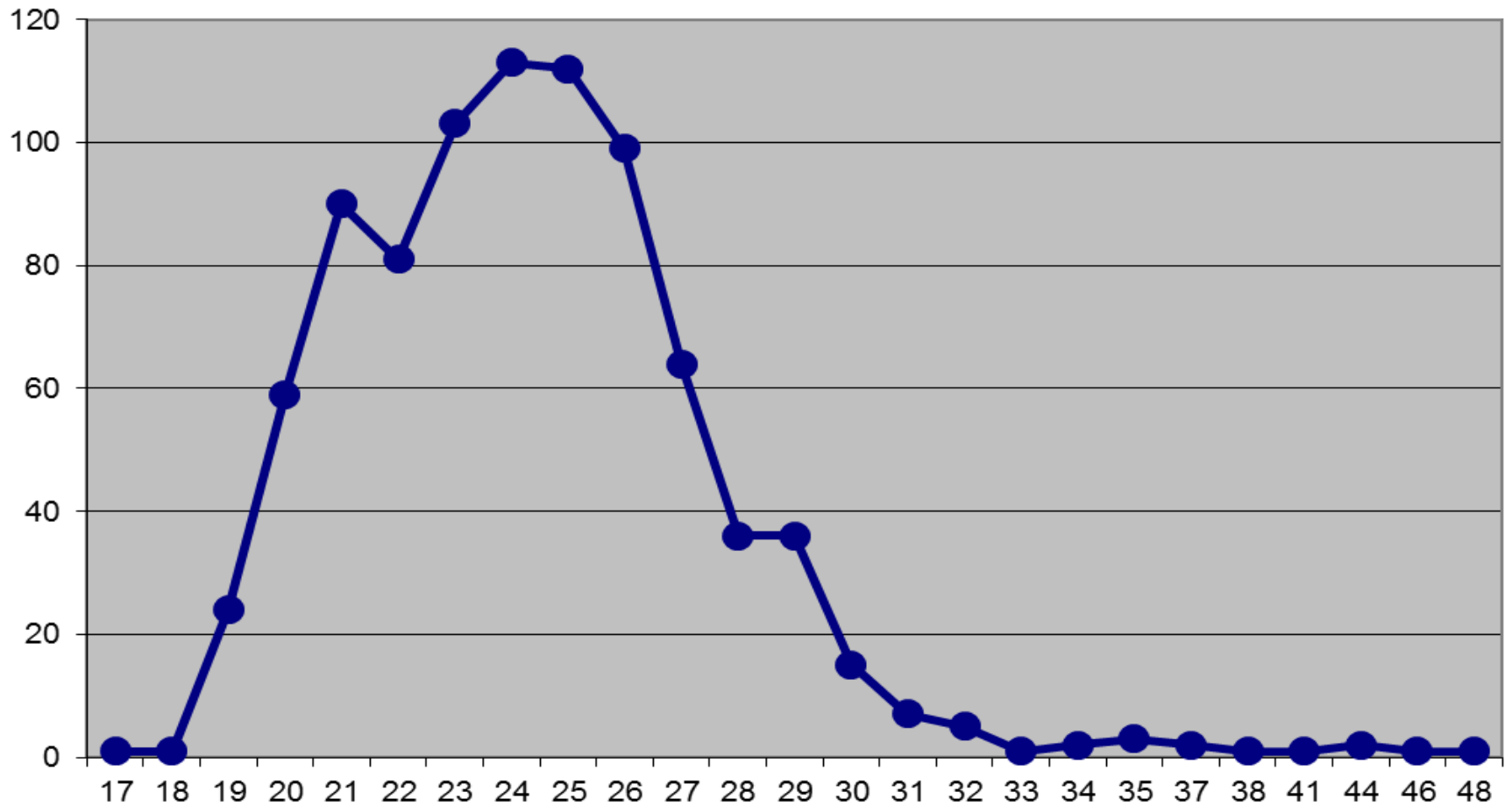


OTHER NATIONALITIES	Total
MALAWI	9
KENYA	6
SWAZILAND	6
CONGO, DEMOCRATIC REPUBLIC OF	4
UGANDA	3
CONGO	3
MAURITIUS	2
ENGLAND	2
CAMEROON	2
ANGOLA	2
GABON	1
IRAN	1
MOZAMBIQUE	1
REUNION	1
SOUTH SUDAN	1
GERMANY	1
BRITISH ANTARCTIC TERRITORY	1
LESOTHO	1
BURUNDI	1
KOREA, REPUBLIC OF (SOUTH)	1

Gender Distribution



STUDENT AGE DISTRIBUTION



Summary points from discussion

- MSA offers CYD units as electives for other degrees too (bigger 1st year group). Those who major continue to 3rd year
- Globalisation is 21st century reality – incorporated in international degree – access to African students
- All training exit levels must consider appropriate learning level (NQF level aligned with Bloom's taxonomy)
- Further development is underway to adapt the current level 7 (Bachelors) and level 8 (Honours) degree to a 4-year professional degree. Part of Advisory Board process
- Further info on current units are on <http://www.monash.edu.au/pubs/2015handbooks/aos/child-and-youth-development/>

Service-user involvement

- Advisory boards – organisations / future employers as service user. Represents youth voice in different sectors. Also student body MUCYDA. Concerns:
 - Continuity, time & expectations (9/16 members):
 - Practice-theory gap – input into curriculum
 - Inform practice needs – relevance & standard
- Need practice for:
 - Document / contribute to research. Open to student research studies.
 - Supervise student placements
 - Promote university, support students to get work

Questions for benchmarking

- Entry requirements – screening. RPL
- Inclusiveness of council – deadline for
- Consulting & communicating with all HEI – availability & easy access to SAQA standards
- Over-qualified CYCWs? Salaries
- Assistance to graduates to register

Questions?

rika.swanzen@monash.edu

